

# FY24-26 Strategic Plan Refresh

District Board of Health Meeting  
December 15, 2022

# Process Overview

## **Mid-July**

All-Staff survey

\*

## **Mid-August – Mid September**

Draft Mission, Vision, Values

\*

## **October**

Strategic Planning Committee Recommendations Presented to Staff & DDs  
CHA, CHIP, Health Equity Committee and Division recommendations  
incorporated into Draft Plan

\*

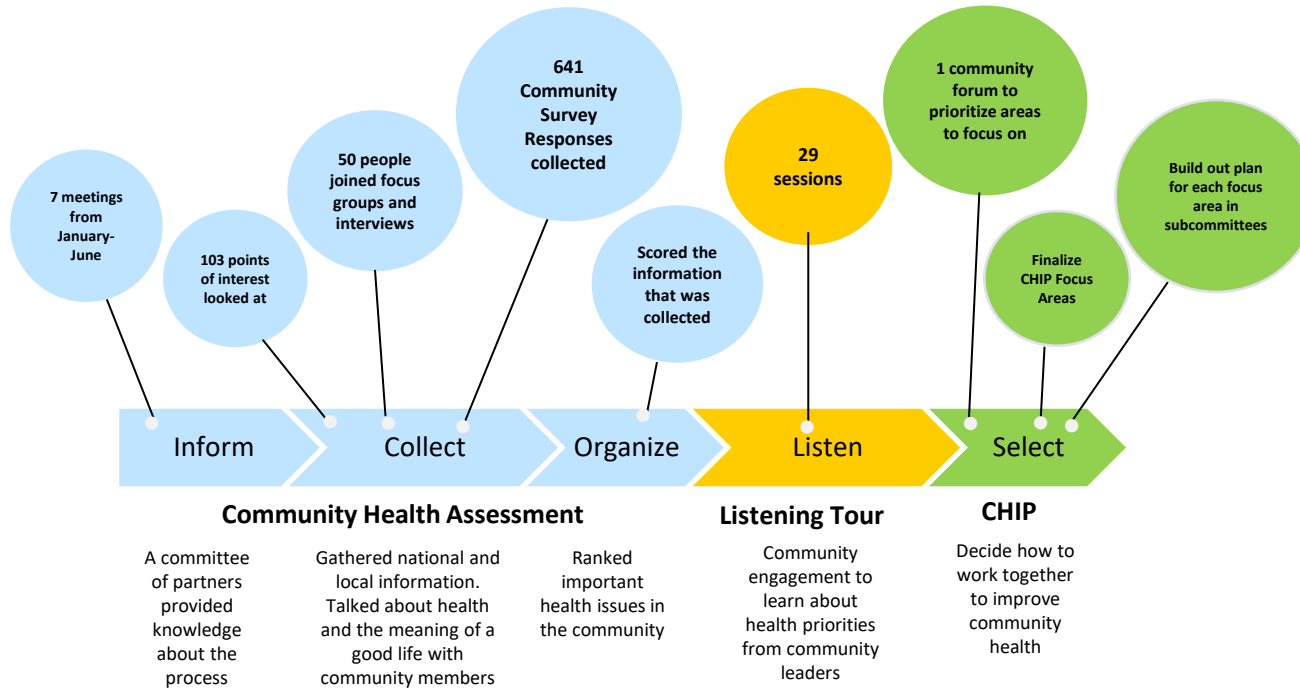
## **November**

DBOH and Staff Leadership Planning Retreat

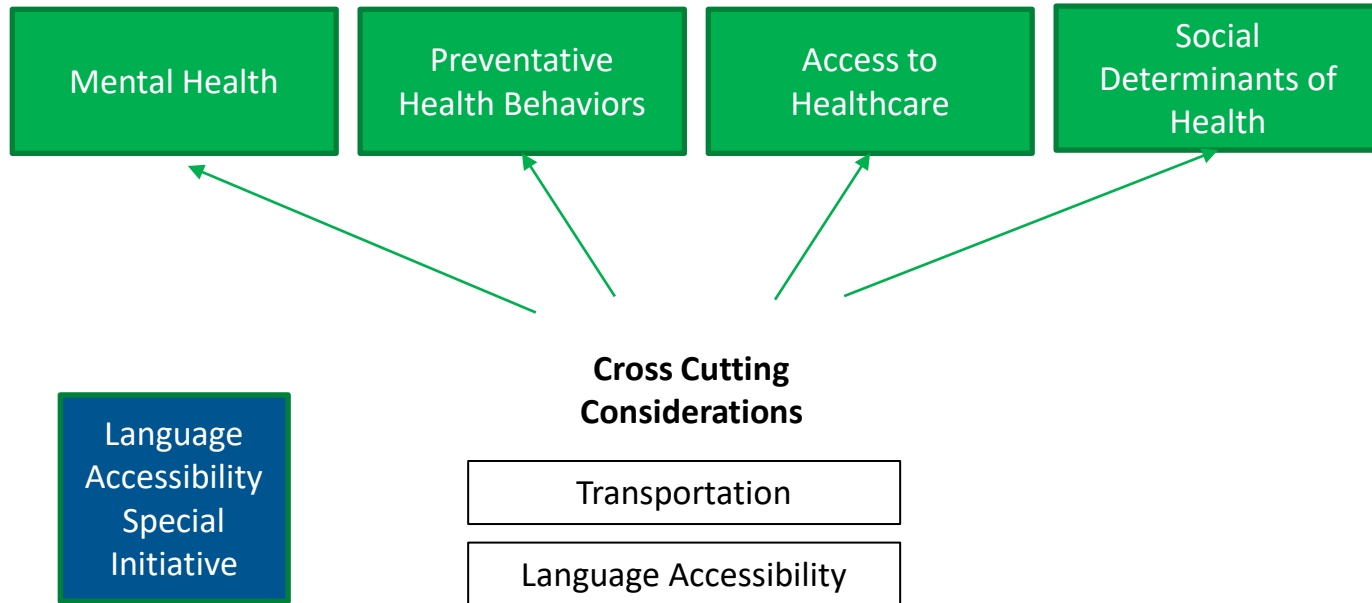
# Plan Inputs

- Community Health Assessment
- Listening Tour
- Community Health Improvement Plan Process
- Health Equity Organizational Capacity Assessment and Plan
- Foundational Public Health Services Workforce Capacity Assessment

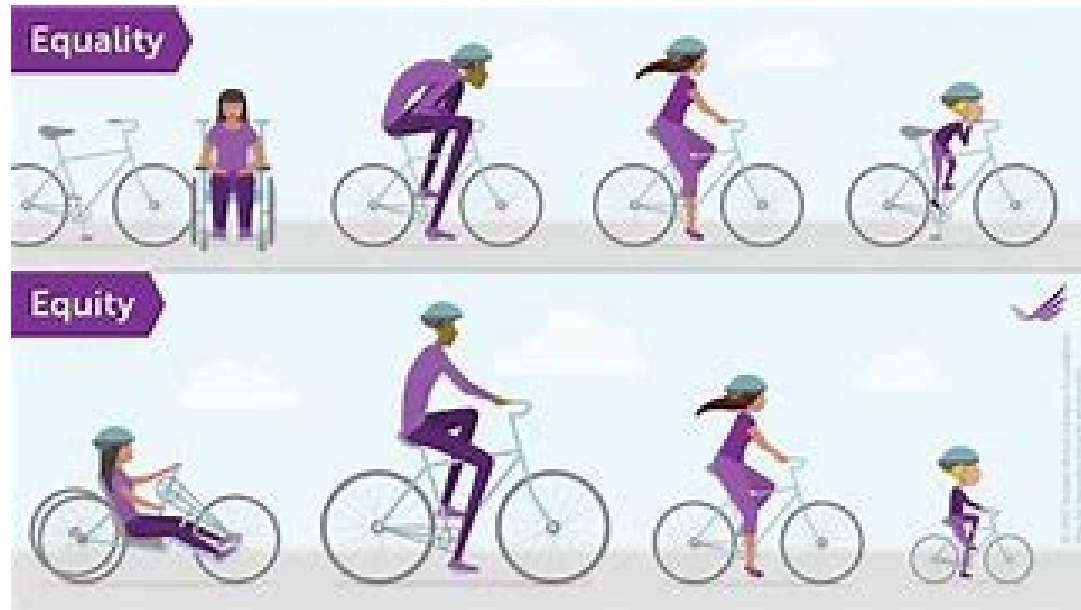
# CHA and CHIP Process



# 22-25 CHIP Focus Areas



# Health Equity Organizational Capacity Assessment and Plan



# Foundational Public Health Services

**Foundational Areas**



# Mission

Our Purpose. Our Why. *Our Impact*

## Current

To protect and enhance the well-being and quality of life for all in Washoe County.

## Proposed/New

To improve and protect our community's quality of life and increase equitable opportunities for better health.



# Values

## Our Behaviors

### Current

Trustworthiness  
Professionalism  
Partner-Collaborate

### Proposed/New

*At WCHD, we are...*

**Collaborative**  
**Adaptable**  
**Trustworthy**  
**Inclusive**  
**Compassionate**

# WCHD Values

Proposed

<b>We are...</b>	<b>Which means...</b>
<b>Collaborative</b>	<p><b><i>In unity there is strength</i></b></p> <p>We believe in genuine collaboration and are committed to working together, combining resources and sharing expertise to strengthen public health.</p>
<b>Adaptable</b>	<p><b><i>Ever evolving and adapting</i></b></p> <p>Public health is always changing. Flexibility is required. We continually push our capacity to adapt, evolve and adjust to new conditions to keep our community healthy and safe.</p>
<b>Trustworthy</b>	<p><b><i>Doing right by the community</i></b></p> <p>We'll earn your trust with honesty and integrity while consistently adhering to ethical principles. Our guidance is reliable, fact-based and in the best interest for all in Washoe County.</p>
<b>Inclusive</b>	<p><b><i>Equity &amp; inclusion for all</i></b></p> <p>Our community is wonderfully diverse. Inclusion is our responsibility, and we will build and sustain an environment that is dedicated to improving health equity by recognizing and overcoming barriers.</p>
<b>Compassionate</b>	<p><b><i>Caring for the health of the community</i></b></p> <p>Our organization is dedicated to serving everyone in our community with compassion, kindness, dignity and respect.</p>

# Strategic Priorities

1. **Healthy Lives:** Improve the health of our community by empowering individuals to live healthier lives.
2. **Healthy Environment:** Create a healthier environment that allows people to safely enjoy everything Washoe County has to offer.
3. **Local Culture of Health:** Lead a transformation in our community's awareness, understanding, and appreciation of health resulting in direct action.
4. **Impactful Partnerships:** Extend our impact by leveraging partnerships to make meaningful progress on health issues.
5. **Organizational Capacity:** Strengthen our workforce and increase operational capacity to support a growing population.
6. **Financial Stability:** Enable the Health District to make long-term commitments in areas that will positively impact the community's health by growing reliable sources of income.

# SPC Recommendations

Current	Proposed (Revised)
<p><b>4. Impactful Partnerships:</b> Extend our impact by leveraging partnerships to make meaningful progress on health issues.</p>	<p><b>4. Impactful Partnerships:</b> Extend our impact by leveraging <b>collaborative</b> partnerships to make meaningful progress on health issues.</p>
<p><b>6. Financial Stability:</b> Enable the Health District to make <del>long-term</del> commitments in areas that will positively impact the community's health <del>by growing</del> reliable sources of income.</p>	<p><b>6. Financial Stability:</b> Enable the Health District to make commitments in areas that will positively impact the community's health through reliable and sustainable funding.</p>

\*Recommended that Health Equity be integrated throughout the plan and not a stand-alone, separate priority.

# Adjustments to Goals

- Add injury prevention to chronic disease prevention activities
- Broaden focus from COVID-19 to include other emerging disease threats
- Emphasize targeted outreach to underserved communities and utilize community organizing principles to improve health equity and address health disparities.
- Advocate for Health in All Policies
- Expand air quality monitoring to community-based sites
- Build partnership efforts focused on the four CHIP priority areas – preventative health behaviors, social determinants of health, access to health care, and mental health
- Expand and improve our facilities to meet needs